



Waterview Condominiums phase 2

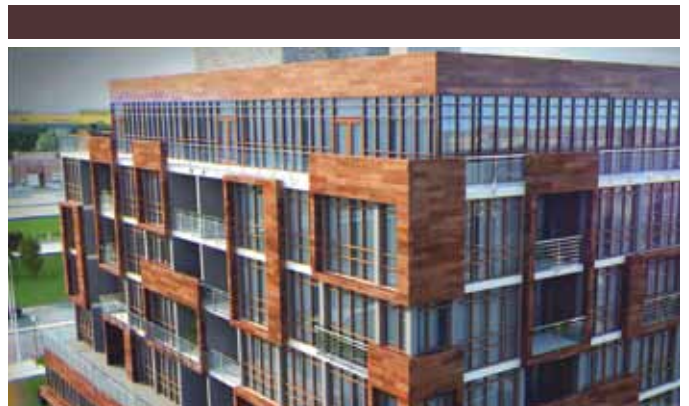
THE SEARCH IS ON

LJM Developments constantly looks to incorporate green living into their projects

A Burlington-based development company has one very telling guiding principle – to provide sustainably appropriate designs with its ever-growing list of green projects.

It's not a wish list, either, for LJM Developments; it's a fact of life. With a track record that showcases the eco-centred attitudes of LJM, there are many examples that highlight their 'living green' mentality.

"LJM Developments is constantly looking for ways to innovate its designs and technology to incorporate green living and more efficient use of energy," says Shaheryar Mian, Business Development Manager at LJM.



Legal Surveys • Land Development Services
Construction Layout Services
Geodetic Surveys • Pre-Engineering Surveys

5001 Corporate Drive, Burlington, surveyed by

**Barich Grenkie
Surveying Ltd.**

**11 - 428 MILLEN ROAD - STONEY CREEK, ON
(905) 662-6767**



Waterview 9th floor view

“The company looks forward to introducing future projects with this very important environmental initiative in mind.”
One has to look no further than three projects currently in develop-

ment, under construction, or completed. Mian pointed to Waterview Condominiums in Grimsby, as well as Appleby Gardens Condominiums and Ironstone Condominiums, both in Burlington.



Appleby Gardens Condominiums

ATA
ARCHITECTS INC.

TORONTO OFFICE
360 Dufferin Street, Suite 103
Toronto, Ontario M6K 1Z8

OAKVILLE OFFICE
211 Lakeshore Road East
Oakville, Ontario L6J 1H7

T 905 849 6986
F 905 849 4369
www.ataarchitectsinc.com

J. D. Hubbert & Associates
CONSULTING ENGINEERS

200 Evans Ave., Unit 11 Etobicoke, ON M8J 1J7
Tel: 416.251.3440 • Fax: 416.251.9168
Email: jdheng@pathcom.com

Waterview’s Phase 1 is now 75 per cent sold. Phase 2 is launching in Spring 2015. There will be close to 300 condos in three high-rise towers – a first, Mian says – and LJM plans to utilize geothermal energy at the site. Compared to a resort-style setup, there will also be a rooftop terrace, with each unit facing out onto Lake Ontario.

He points out that “people can walk out to the lake and have access to the beach right there. We find that the building has been selling really quickly, especially given that it’s the first building of its kind in the area.”

Another project that personifies modern green living is Appleby Gardens at the corner of Corporate Drive and Appleby Line.

Right away you notice how residents can easily access basic amenities close by. They are within walking distance of restaurants, fitness facilities and shops.

Better still, they are kitty-corner to grocery stores, schools, green spaces, trails, the QEW highway and the Burlington GO station.

“We also put in independent unit controls for heating and cooling,” Mian says.

“There is also independent suite hydro metering, and some appliances are Energy Star.”

Appleby Gardens, he says, “is an area that has developed tremendously in the last five years. And it’s just four kilometres from Lake Ontario. It sits in the middle of a developed neighbourhood, and a place that’s very attractive for young couples and young people, as well as couples who wish to retire there.”

Perhaps the Ironstone project best demonstrates LJM’s green track record. Completed a couple of years ago, and fully occupied now, Ironstone provides a setting that appeals to families wanting to live in an urban neighbourhood, yet also seeking a green lifestyle.

Standing out as one of the first high-rise residential buildings in Canada with full geothermal heating and cooling throughout, it was a trailblazer, to be sure.

DAVIES SMITH DEVELOPMENTS
Your Home. Our Passion. www.davies-smith.com

Move-In 2015

Your Home. Our Passion.
Creativity flourishes in every Davies Smith project. Our fusion of imagination and craftsmanship articulates your desire for a distinctive home and a complete lifestyle experience. With thirteen buildings and over forty industry awards, you can expect more from Davies Smith Developments.

ELEVEN SUPERIOR
MODERN MIMICO LIVING
STARTING FROM THE \$300s
ElevenSuperior.com | 416.259.8882

Steps from the waterfront and minutes to downtown Toronto, **Mimico-by-the-Lake** offers lake-side living with convenient transit right at your door step.

PRESENTATION CENTRE located at 2398 Lake Shore Blvd. West, Etobicoke ON

To learn more about Davies Smith Developments and our projects please visit www.davies-smith.com

IRONSTONE Only a few remain 416.363.1030 ext. 227	HEARTHSTONE BY THE BAY Retirement Condominiums 416.259.4466	SOLSTICE Sold Out
Citygate I & II in Mississauga Sold Out	ONYX Onyx in Mississauga Sold Out	GRENADIER Grenadier in Toronto Sold Out

All renderings are artist's concept. Prices and specifications are subject to change without notice. E. & O. E.



Appleby Gardens Condominiums

With the market fluctuations of oil and gas, never more evident than in today's marketplace, the sustainable energy source proved an attractive addition.

But LJM took their green initiatives even further, starting with a 1,500-square-foot rooftop courtyard. Residents, then, were able to enjoy outdoor living, capped off with an outdoor hot tub. There are also outdoor kitchen facilities, dining and lounge areas.

The list goes on. Other green initiatives include water conservation through low-flow faucets and toilets, auxiliary solar elements, a room for recycling, and secure bicycle parking. Even during construction, LJM utilized green construction practices, using building materials with recycled content and waste management reduction procedures.

"It transformed Burlington's skyline and became the tallest building in the city at the time," says Mian. "It was the first green building in the area and was recognized across Ontario for its green initiatives."

www.ljmdevelopments.ca

With over a decade of unsurpassed excellence, LJM Developments is a recognized industry leader in real estate development.

The company has developed highly-acclaimed signature projects that are a perfect synergy of world class architectural design and cutting-edge construction quality.

The company has launched key initiatives in Southern Ontario, including Toronto, Burlington, and Grimsby.



Ironstone Condominium